



# 250 SX



## ENGINE

1-cylinder, 2-stroke engine

## DISPLACEMENT

249

## RATED OUTPUT

## MAX. TORQUE

## COOLING SYSTEM

Liquid cooled

## LENGTH / WIDTH / HEIGHT / WEIGHT

///

## SEAT HEIGHT

958mm

## GEARBOX

5 Speed

## TANK CAPACITY

7.2 l



FROM

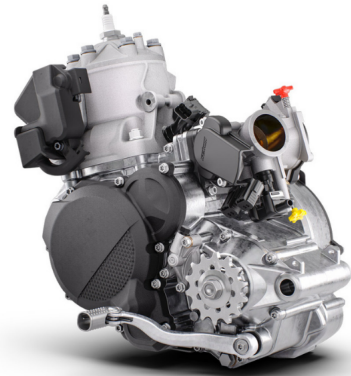
**£8,599**

+ OTR

# 250 SX FEATURES

## ELECTRONIC FUEL INJECTION

Pre-mix gets a remix across the 2-stroke KTM SX range, with Electronic Fuel Injection setting the standard. Now there's no more fiddly jetting setup pre-race, And thanks to the Keihin EFI and reed valve case design, you can be guaranteed of laying down optimal power at any altitude, all of the time.



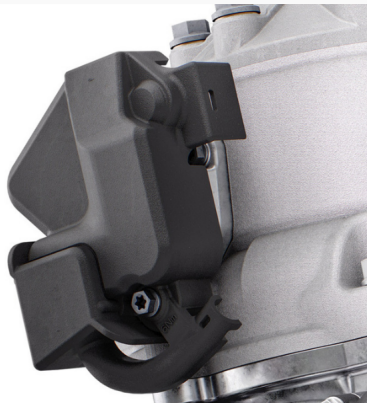
## ELECTRIC START

Picture this; You're 7 laps into an absolute ripper of a race. You miss your line and end up stalling in a deep rut. But you don't sweat it. All you do is press the starter button and you blast off again to take the final flag. This is the reality on the 2025 KTM 250 SX. Thanks to a 12,8V 2 Ah lithium ion battery is placed under the rider's seat, a high-quality stator & pickup and super robust design, the only thing you'll be kicking - is ass.

## EASY SUSPENSION ADJUSTMENT

As always, the suspension boasts an easy tool-free setup at both ends, ensuring you chase down the podium in total control. On the rear, a hand-adjustable dual compression control allows riders to adjust high- and low-speed settings in a matter of seconds. The forks on the front end are also easily adjusted thanks to hand-adjustable clickers on the bottom of the fork shoe and top cap.



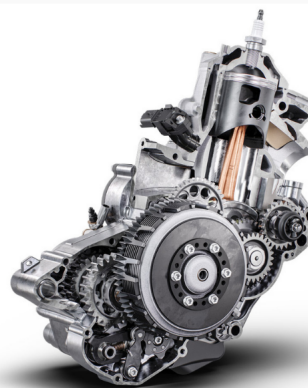


## EFI + POWER VALVE

With EFI comes great rideability. Along with the electronic fuel injection and a power valve on the KTM 250 SX, allowing for more usable power throughout the rev range. Smoother power means better traction. Better traction means holeshot heaven!

## PERFORMANCE

The KTM 250 SX has always represented the very best of unsurpassed power and lightweight construction. The simplicity and low maintenance cost of the 2-stroke motor have made it a favorite amongst motocross riders for generations. For 2025, The KTM 250 SX enters the race paddock with an overall engine weight of only 23,9 kg, setting the 250 SX engine as the benchmark in the highly competitive 250 cc class.



## SELECTABLE MAPS

The 2025 KTM 250 SX features a map select switch allowing the racer to switch between 2 engine maps. Map 1 provides a linear, predictable power delivery, while Map 2 gives it the full beans with crisp, explosive power output.

## WP XACT FORK

Let's get the technical parts out of the way first; the 48 mm WP XACT AER forks fitted to the 2025 KTM SX and SX-F line-up features a capsulated air spring and pressurized oil chamber for progressive and consistent damping, while oil and air bypasses reduce pressure peaks. In combination with the mid-valve damping system, all this provides exceptional feedback and rider comfort. The fork also boasts new settings, which not only compliment the updated frame and rear linkage, but ensures stellar p





## WP XACT SHOCK

Keeping things in check at the rear, the WP XACT rear shock has also undergone some changes for 2025 using settings directly from the KTM Factory Racing Teams. The improved frame and shock geometry mean more ground clearance at the linkage, making it less susceptible to bottoming out. While we're on the topic, smaller diameter linkage bolts save weight, while new linkage seals refine rear shock response and advanced damping characteristics.

## ENERGY ABSORPTION

Besides the expertly crafted, hydro-formed, laser-cut, and robot-welded frame being engineered to provide exceptional rider feedback and straight-line stability, it consists of specifically calculated parameters of longitudinal and torsional flex. This means the frame acts as a "shock absorber" of sorts, making for a less harsh ride, resulting in less rider fatigue over many hard laps.



## ABSOLUTE CONTROL

Get ready for a full-on berm assault. The 2025 KTM SX and SX-F machines have received major frame updates directly from Factory Racing efforts. For starters, the frame area around the rear shock mount has been updated and made more streamlined, with new engine mounts and cut-outs for improved chassis flex. The front area of the frame is also updated, with a different wall thickness than the previous model year, with renewed engine mounts. This adds up to a 300g weight saving and improved flex for



# 250 SX FINANCE

Flexible payment options to suit your budget

## HP Finance

Hire Purchase

8.90% APR

£188.69

Monthly Payment

£1000.00

Customer Deposit

48

Months Term

Cash Price:	£8647
Total Amount of Credit:	£7647
Agreement Duration:	48 months
Interest Rate (Fixed):	4.84%
Monthly Payments:	£188.69
Total Amount Payable:	£10,057.12

Rates available from 8.90% APR; 8.90% APR Representative. Finance is provided by MotoNovo Finance Limited, company no. 11556144, registered in Wales at 2 Central Square, Cardiff, CF10 1FS. Authorised and regulated by the Financial Conduct Authority under FRN 827851. All applications for credit are subject to eligibility and affordability criteria. The rate shown may not be the rate you are offered. MotoNovo interest rates start from [INTEREST] Fixed / 8.90% APR. MotoGB Ltd is authorised and regulated by the Financial Conduct Authority FCA 661247 and acts as a credit broker not a lender. MotoGB may receive a commission from the finance company for introducing the transaction. You can ask them to tell you the amount of that commission.

